



創唯實業有限公司

PLASTRONIC TECHNOLOGY CO., LTD.

TEL : 886-2-2276-3375

www.loadcell.com.tw

FAX : 886-2-2276-3557

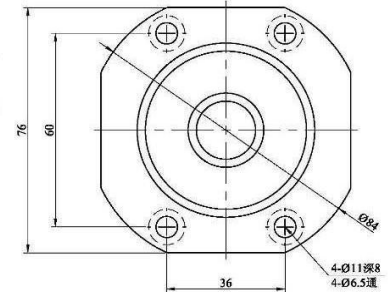
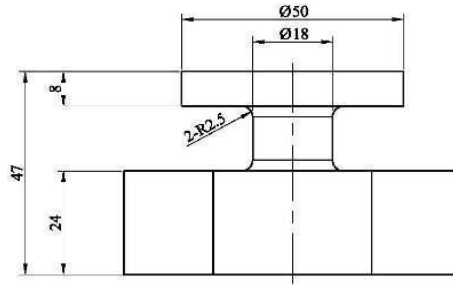
www.plastronic.com.tw

E-mail: plastronictech@gmail.com

新北市24252新莊區化成路398巷13號

No.13, Lane 398, Huacheng Rd., Xinzhuang Dist., New Taipei City 24252, Taiwan

NQ14



應用：卡氏模專用沖壓荷重元

Applications: applicator of stamping and clamping machine

技術規格 Specification

| | | |
|-------------|------------------------------|-----------------|
| 額定荷重 | Rated Capacities | 4, 40 kN |
| 額定輸出 | Rated Output | 0.85~0.88 mV/V |
| 非線性 | Non-linearity | < 1 %F.S |
| 遲滯 | Hysteresis | < 1 %F.S |
| 重複性 | Repeatability | < 1 %F.S |
| 蠕變/回零(20分鐘) | 20mins Creep/DR | < 1 %F.S |
| 輸出溫度影響 | Temperature Effect On Output | < 0.3 %F.S/10°C |
| 零點溫度影響 | Temperature Effect On Zero | < 0.3 %F.S/10°C |
| 零點平衡 | Zero Balance | ±0.0200 mV/V |
| 輸入阻抗 | Input Impedance | 350±5 Ω |
| 輸出阻抗 | Output Impedance | 350±5 Ω |
| 絕緣阻抗 | Insulation Impedance | ≥5000 MΩ |
| 安全過載率 | Safe Overload | 150 %F.S |
| 極限過載率 | Ultimate Overload | 200 %F.S |
| 工作溫度範圍 | Operating Temperature Range | -20~60 °C |
| 建議工作電壓 | Recommended Excitation | 5~12 VDC |
| 最大工作電壓 | Maximum Excitation | 15 VDC |
| 材質 | Construction | 鋼合金 Steel Alloy |
| 防水等級 | Protection Class | IP66 |
| 電纜線 | Cable | Φ5*3.5m |
| 建議台面尺寸 | Recommended Platform Size | |

接線方式 Mode of Connection

棕：電源+，白：電源-，綠：信號+，黃：信號-
Brown[EXC+], White[EXC-], Green[SIG+], Yellow[SIG-]